

# KRISH DESIGN SOLUTION



## Krish Design Solution

*Krish Design Solution is one of the outsourcing company offering lucrative solutions to clients within specified deadline. Decades of experience in assisting many of the Mechanical, Electrical & Plumbing companies with their design and drafting needs make us stand out as a leader in a cut throat competition*

### KRISH DESIGN SOLUTION

- NO,31/5,Vinoba Nagar,  
5th Street,Tondiarpet,  
Chennai-600081.

8438202610

[Type the fax number]

01-Jan-17

# Contents

- Introduction
- Team Profile
- Values
- Portfolio of Services
- Customers
- Projects

# Introduction

**Krish Design Solution** is one of the outsourcing company offering lucrative solutions to clients within specified deadline. Experience in assisting many of the Architecture, Structural, Mechanical, Electrical & Plumbing companies with their design and drafting needs make us stand out as a leader in a cut throat competition.

- **AutoCAD, Revit, Microstation, 3Ds Max and AECOsims** are the latest software that eventually helps us provide the most accurate design and drafting solutions to our clients. The team consists of qualified Engineers, Draftsmen, Experts and Superiority Analyst. Innovative technical expertise and modernized design process make us add value to our clients business so that they can have their attention on their core competencies.
- We also doing all kind of **Designing & Modeling** services for Govt. Projects and private sectors
- We involving in **Sign board** installation for residential buildings and Factories
- We involving in **Erection support** works like Metro projects, factory mep service installations
- We involving in **CCTV installation** for individual house, apartments and factories
- Fire Evacuation drawings for commercial building and factories

# Values

---

## **Commitment**

We believe our growth is directly linked to the growth of our customers. We strive hard to deliver what is committed with no compromises on quality.

---

## **Competence**

We have over 4 years of experience in design, development and execution of Building Infra, Fire Safety and Government projects. We have the right mix of skill and experience to handle challenging problems and provide cost effective solutions.

---

## **Differentiators**

We dedicate ourselves to our customers' success and are building our reputation through quality work, commitment to excellence, timely delivery and by retaining engineering talent in our chosen market segments.

## **Quality**

Quality is way of life at Krish Design Solution in everything we do and we focus on customer centric quality systems and processes.

# Portfolio of Services

- Architecture Design and Drafting
- Structural Design and Drafting Services
- HVAC Design and Drafting Services
- Electrical Design and Drafting Services
- Plumbing Design and Drafting Services
- firefighting & fire alarm Design and Drafting Services
- Interior and Exterior Design and Drafting Services
- IT Infrastructure Turnkey – Design, Install, Commission and Maintain
- Fire Detection & Alarm System – Addressable FAS, Fire Safety Equipment
- Fire Sprinkler Systems – Flexi Type, Hydrant
- Structured Cabling – Data, Voice, Fibre Cabling
- Voice – Telephone Cabling, PBX/ EPBAX, Intercom
- Security – CCTV, Surveillance, Identification, Alarm,
- Access Control Systems
  
- Boom Barrier , Trunstiles,Trilock
  
- Erection Support for Metro projects and Factories MEP service installation

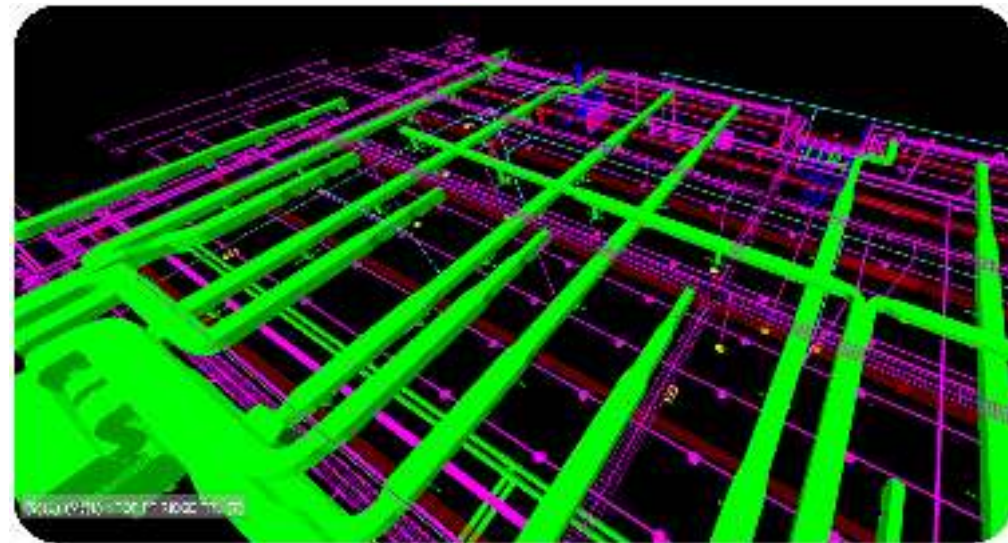
# Key Customers

- Indian Oil Corporation Limited, Chennai
- Voltas, Chennai
- Bharat Petroleum Corporation Limited , Chennai
- NTC Logistics India (P) Limited, Chennai
- Sukir Consulting Engineering, Chennai
- Metro Project Teynampet Station for Government Project(CMRL) - MEP Drawing.
- Nagpur Metro Railway Corporation Limited-Fire Fighting Services
- Ever life Fire Safety Systems (P) Limited, Chennai
- K R Fire Solution & Equipments, Chennai
- Apex Constructions
- Indo Shell Cast, Coimbatore – Automobile parts supplier
- Starboard Hotels Company Pvt Ltd, Chennai - Operations Office, Projects Office - 100 Seaters office, Backbone Fibre Infrastructure - Server to Office

- Samrya Towers ELV Consulting (CCTV, Fibre Backbone, Data and Voice) – 44 Floor Business/ Hotel, Doha, Qatar
- Softgel Healthcare – Part of Madras Pharma, Chennai
- RAS Life Sciences, Hyderabad
- IVTL Infoview Private Limited, Chennai
- Saint Gobain India Pvt Ltd, Sriperumputhur / Chennai - Glass Manufacturing Plant – Fire / CCTV
- Phoenix Market City Mall, Chennai – 6 Projects
- Precia Molen – French company in Chennai – Big weighing machine operator
- Steril Gene Life Sciences Pvt Ltd, PondicherryInnowell Engineering internation Pvt Ltd, Chennai
- Pareto Design Service, Chennai
- Kovai Pazhamudir Nilayam, Head office chennai
- Le Royal Meridian- Boom Barrier Chennai/ Coimbatore

# Project - MEP Service\_ LOD 300 Stage Development\_Innowell

- Model development for LOD 300 stage from Cad input to 3D model using Revit 2017
- Clash Free with complete co-ordination done with help of Navis works manage





# Project - MEP Service\_ LOD 400 Stage Development\_Oman Mall

- Model development for LOD 400 stage from Cad input to 3D model using Revit 2017
- Clash Free with complete co-ordination done with help of Navis works manage



# Project - ARC\_Floor plan development Residential Building\_Praba Builders

- Floor plan has developed as per given floor area within one week

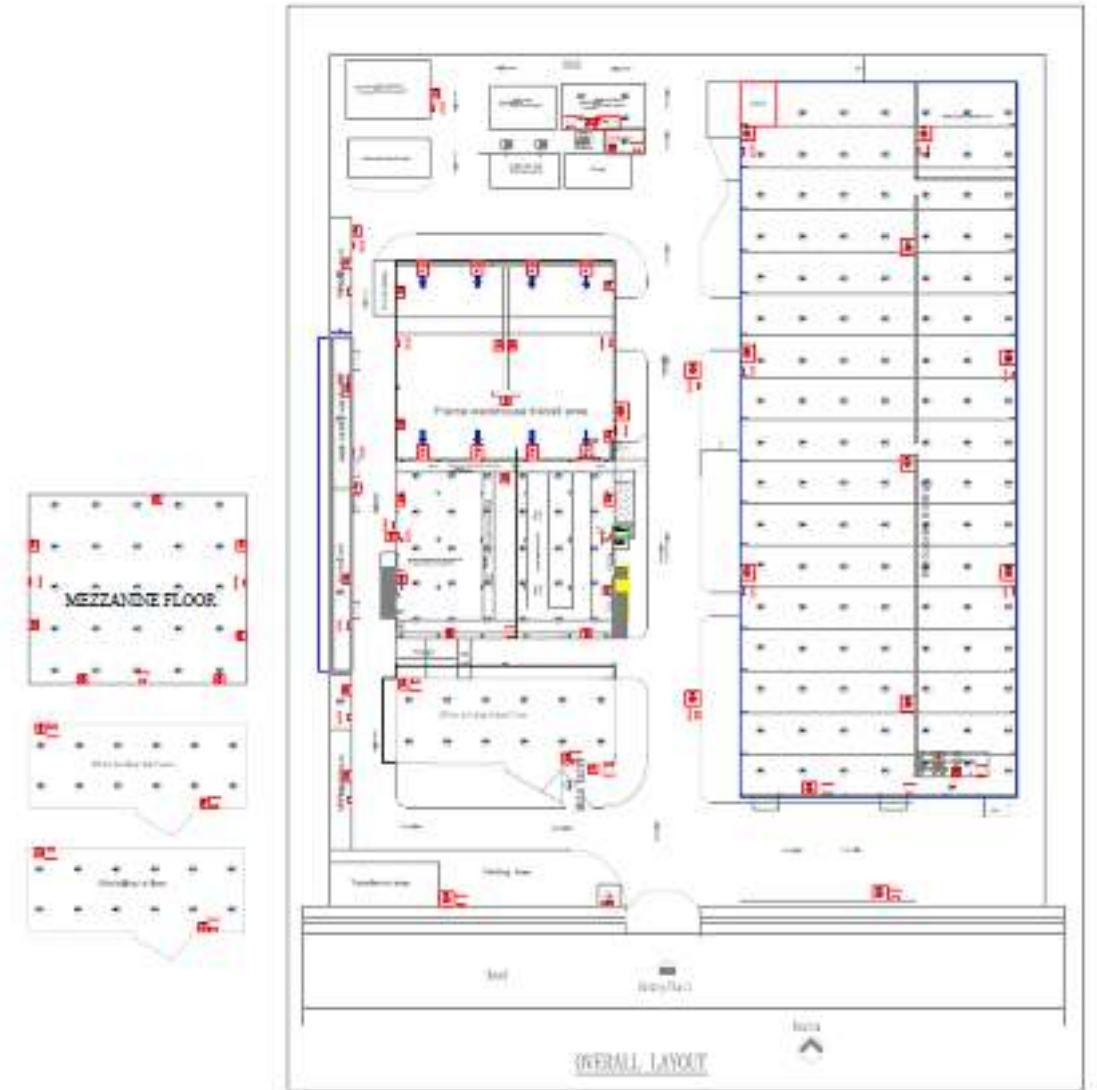


# Projects – Industrial Building

Design and Installation of Fire Fighting,  
Chennai

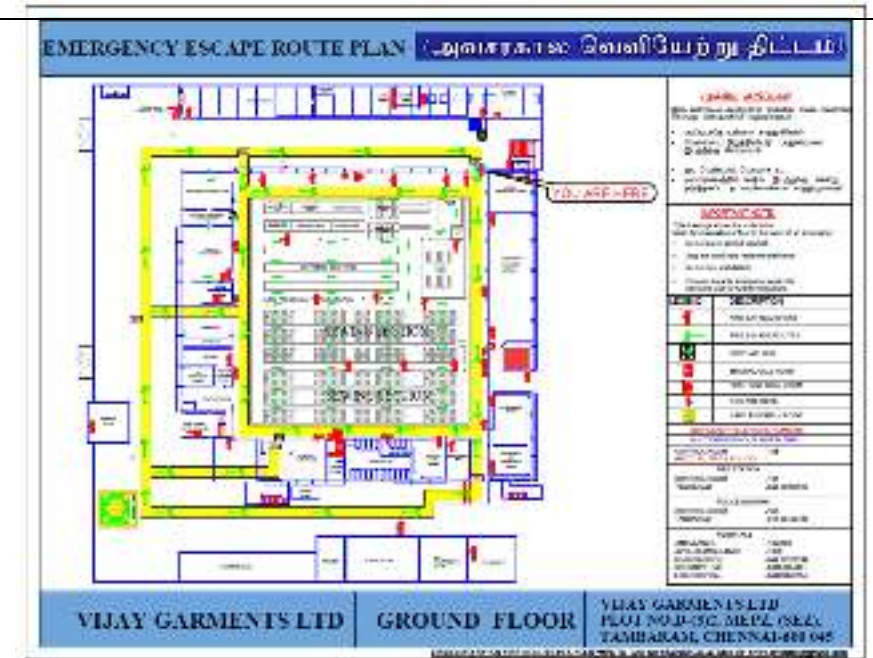
- Designing & Installation of Fire Hydrant System
- Designing & Installation of Sprinkler System

Designing & Installation of Fire Alarm System



# Projects -Evacuation Route Plan

- Evacuation Route Plan - Hallmark Towers G+8 Floors.
- Evacuation Route Plan - Vijay Garments (P) Limited, Tambaram MEPZ-(SEZ).
- Evacuation Route Plan - Magnum Clothing (P) Limited, Chennai.

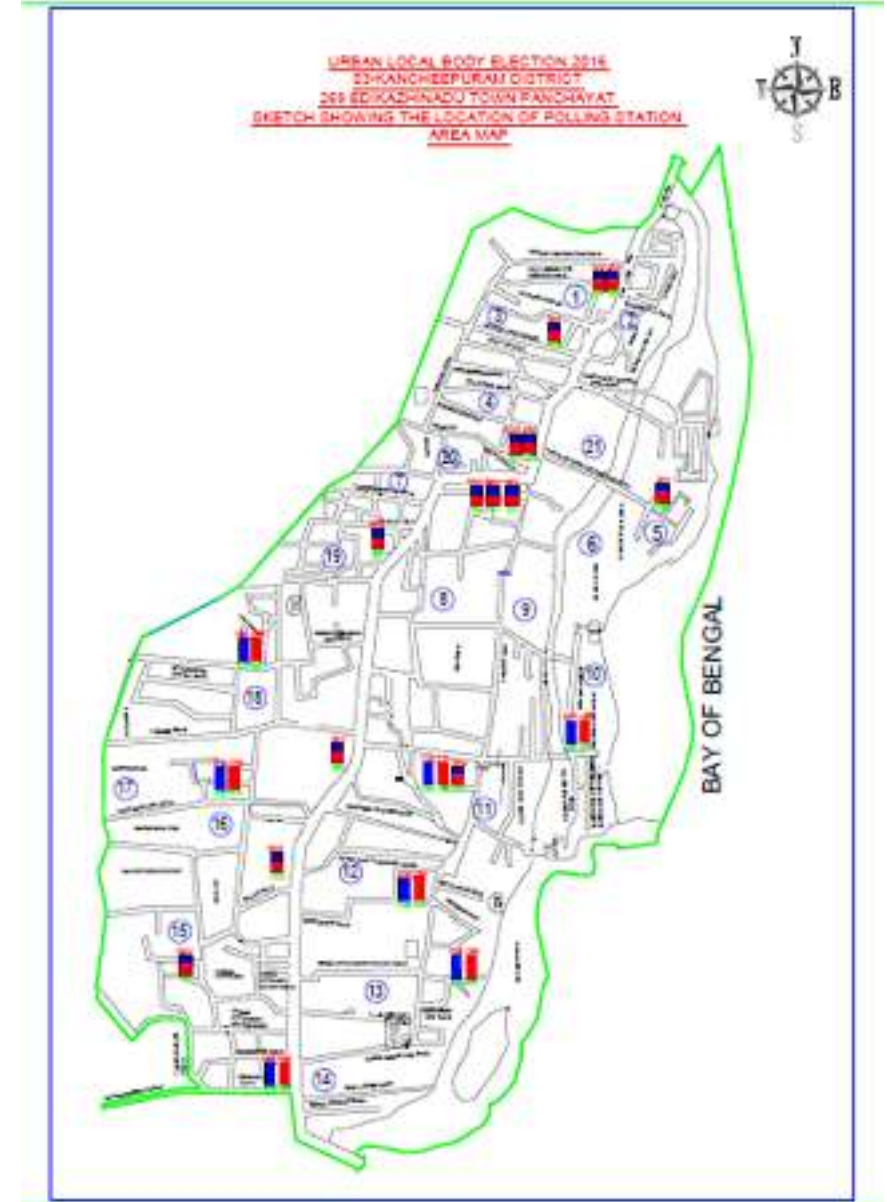




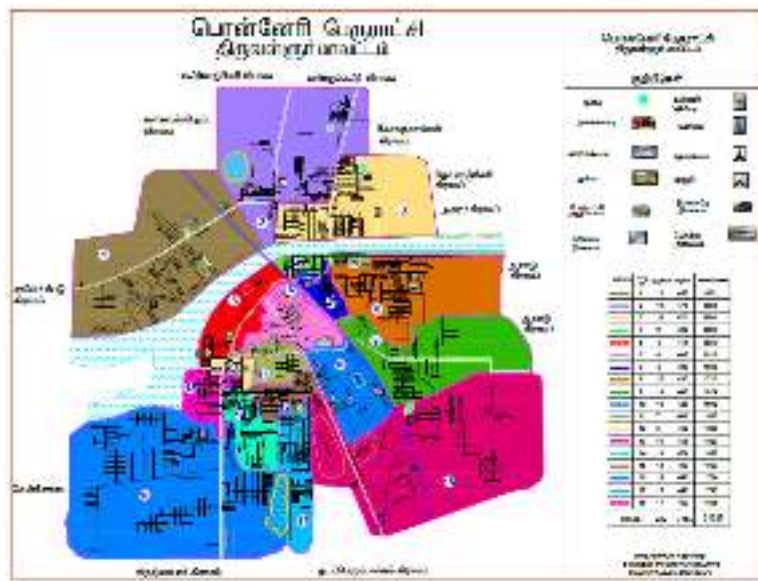
# Projects - Government Project

- Polling Station Route Map & Voter List-Mamallapuram Town Panchayat.
- SWACHH BHARATH MISSION (Insanitary Latrine)
  - Mamallapuram Town Panchayat
  - Kundrathur Town Panchayat
  - Chitlapakkam Town Panchayat
  - Madambakkam Town Panchayat

Water Supply Details & OHT Tank in each & every Wards Ponneri Town Panchayat.

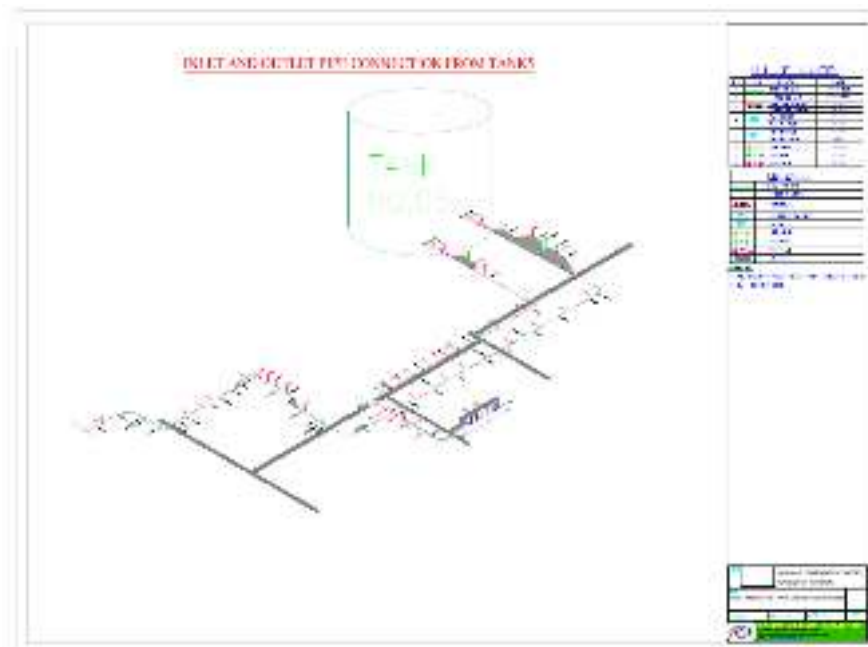
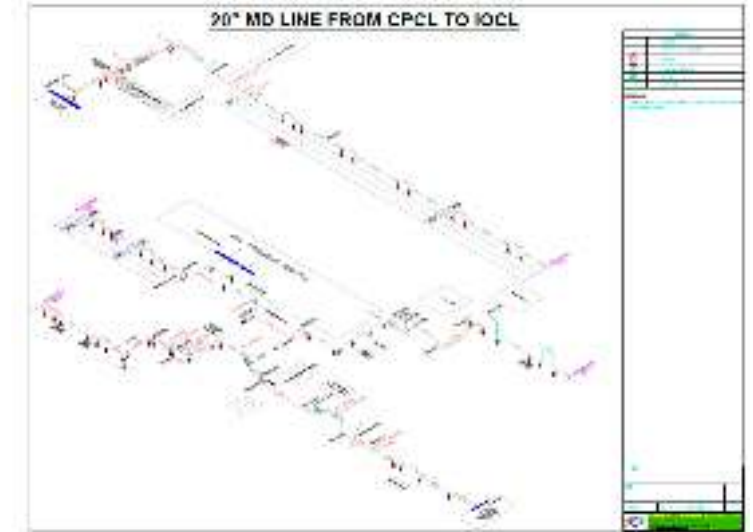


- Poling station route map & voters list
- Existing households in map in each & every ward
- Swachh bharrath mission ( insanitary latrine ) for under city sanititon plan
- Swachh bharrath mission ( septic tank ) for under city sanititon plan
- Water supply details & OHT tank in each & every ward
- Overall map drawing in street wise each & every ward



- Dengue affected area map drawing
- Flood map drawings

- 5 pipe line for Isometric Drawing from CPCL to Korukkupet Terminal.(IOCL)
- Inlet & Outlet Pipe line Flow Direction tank no 1-15.(IOCL-Tondiarpet Terminal)



# Projects - Apex Construction

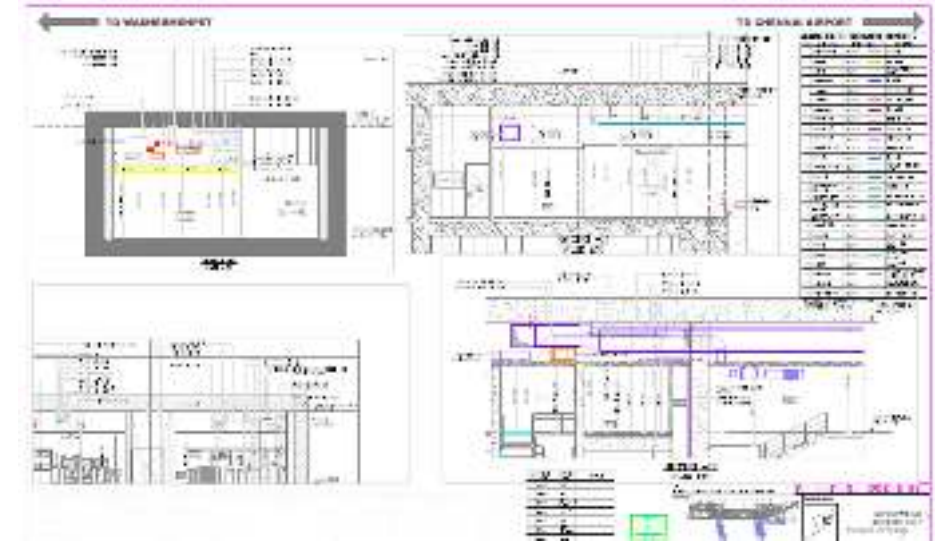
- Individual House - Velachery - Area 1500 Square feet (G+1 Floor).
- Individual House - Tondiarpet - Area 1200 Square feet (G+2 Floor).
- Philadelphia Project - Netherland- As-built Drawing
  - ✓ Utrecht Daalseweg
  - ✓ Hoogvliet Eline Verestraat
  - ✓ Delft Laan van Braat
  - ✓ Harderwijk Knijptang
  - ✓ Leusden Arnhemseweg





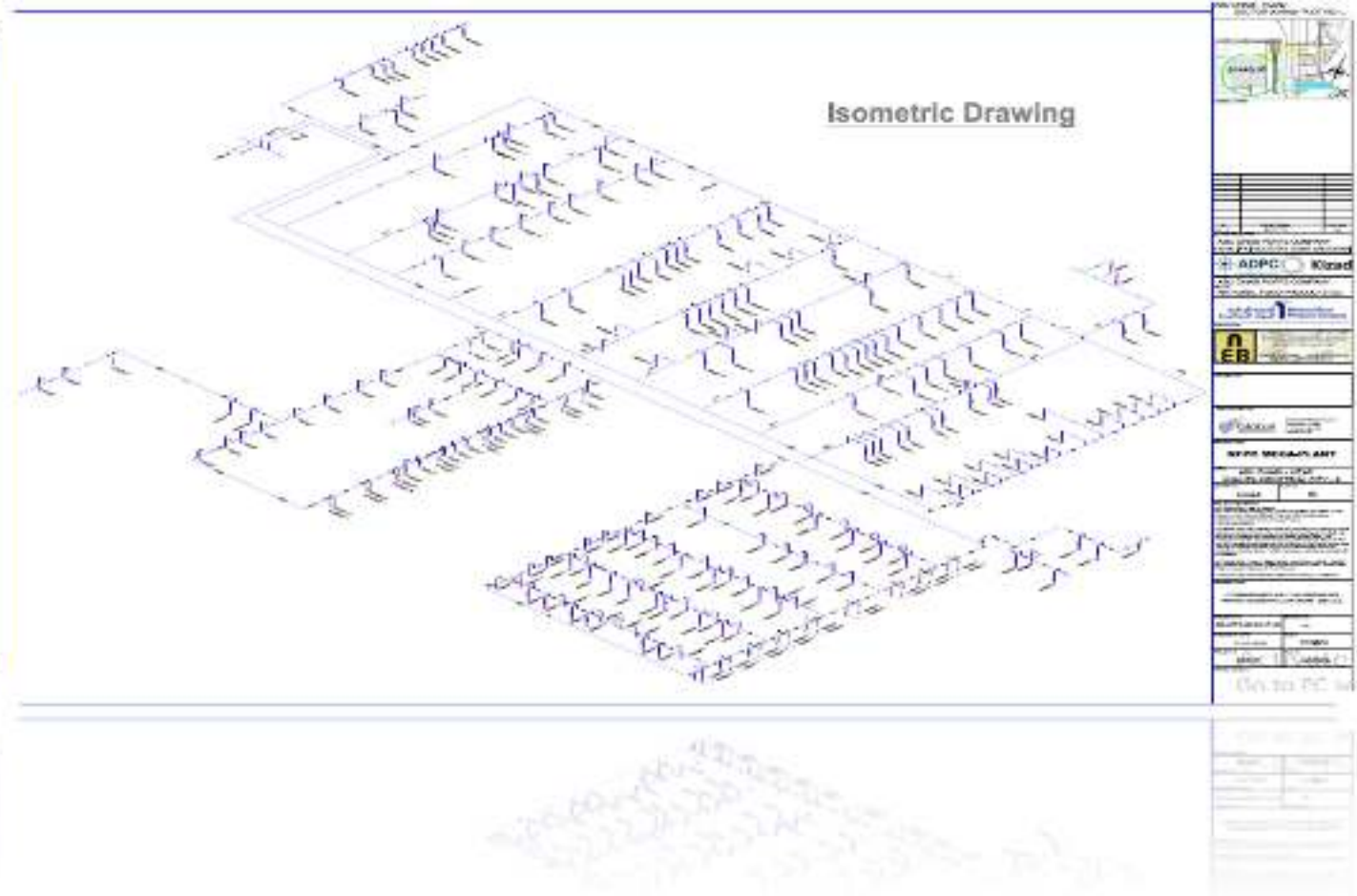
# Projects – MEP Service Drawing- Chennai & Nagpur Metro Railway Limited (CMRL&NMRCCL)

- Teynampet Metro Station
- Thousand Light Metro Station
- Jaiprkash Nagar Station – Nagpur
- Ujjwal Station - Nagpur



# Project\_Isometric Development\_Dubai outsource

- Isometric plan has generated from 2D input within 2days.



## Project \_Sign Board Installation\_ RWD Builders

Site Location: Nelson Manikam Road\_ (Ongoing Project)

Future projects: RWD\_ Egmore & Ambathur



**Installation sign board snaps while work in progress:**





## Project\_Erection Process\_Chennai Metro Projects:

We are currently support the erection work in Chennai metro project\_major stations



# Project\_BIM Services\_Interior designing & Front elevation:

















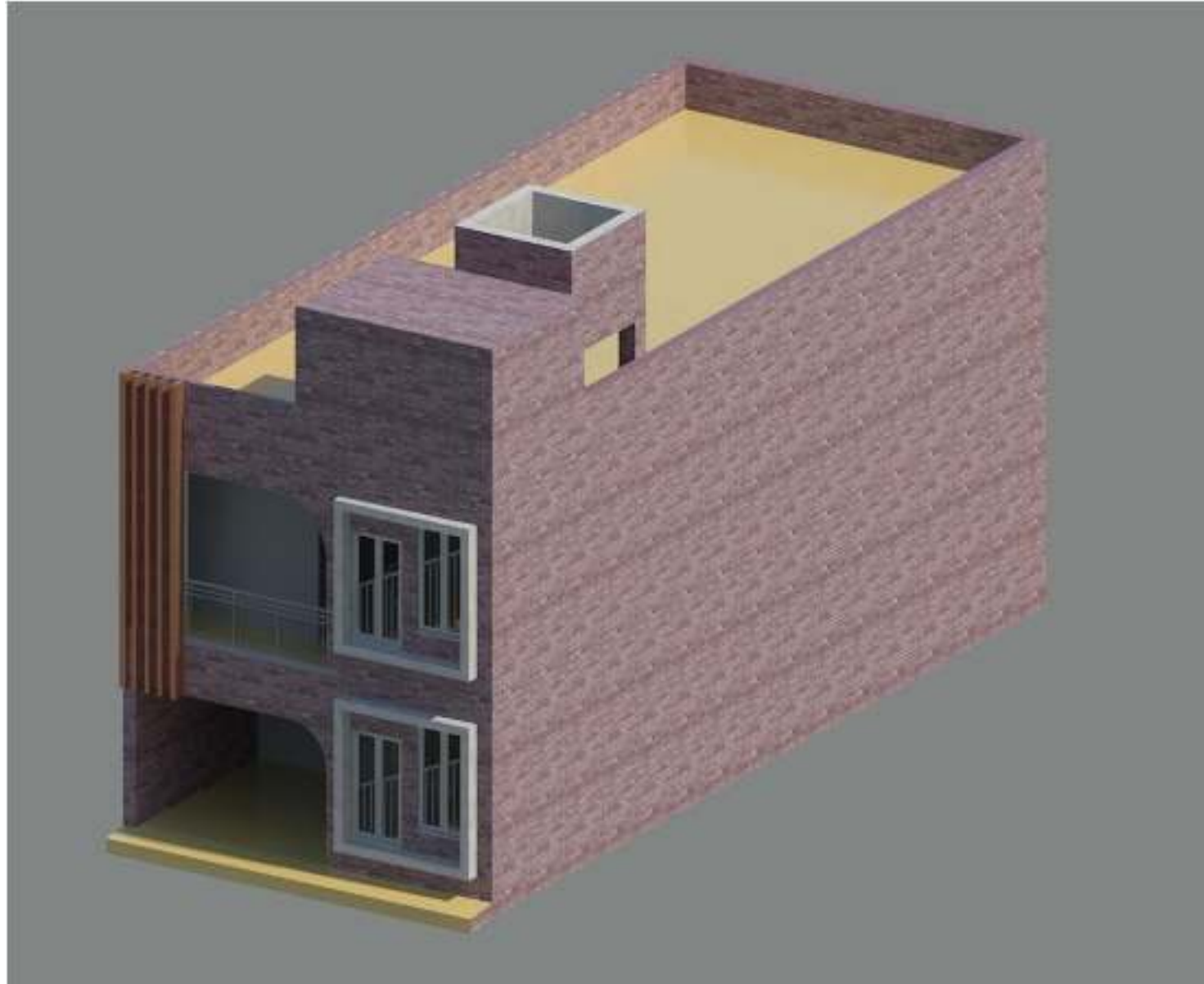




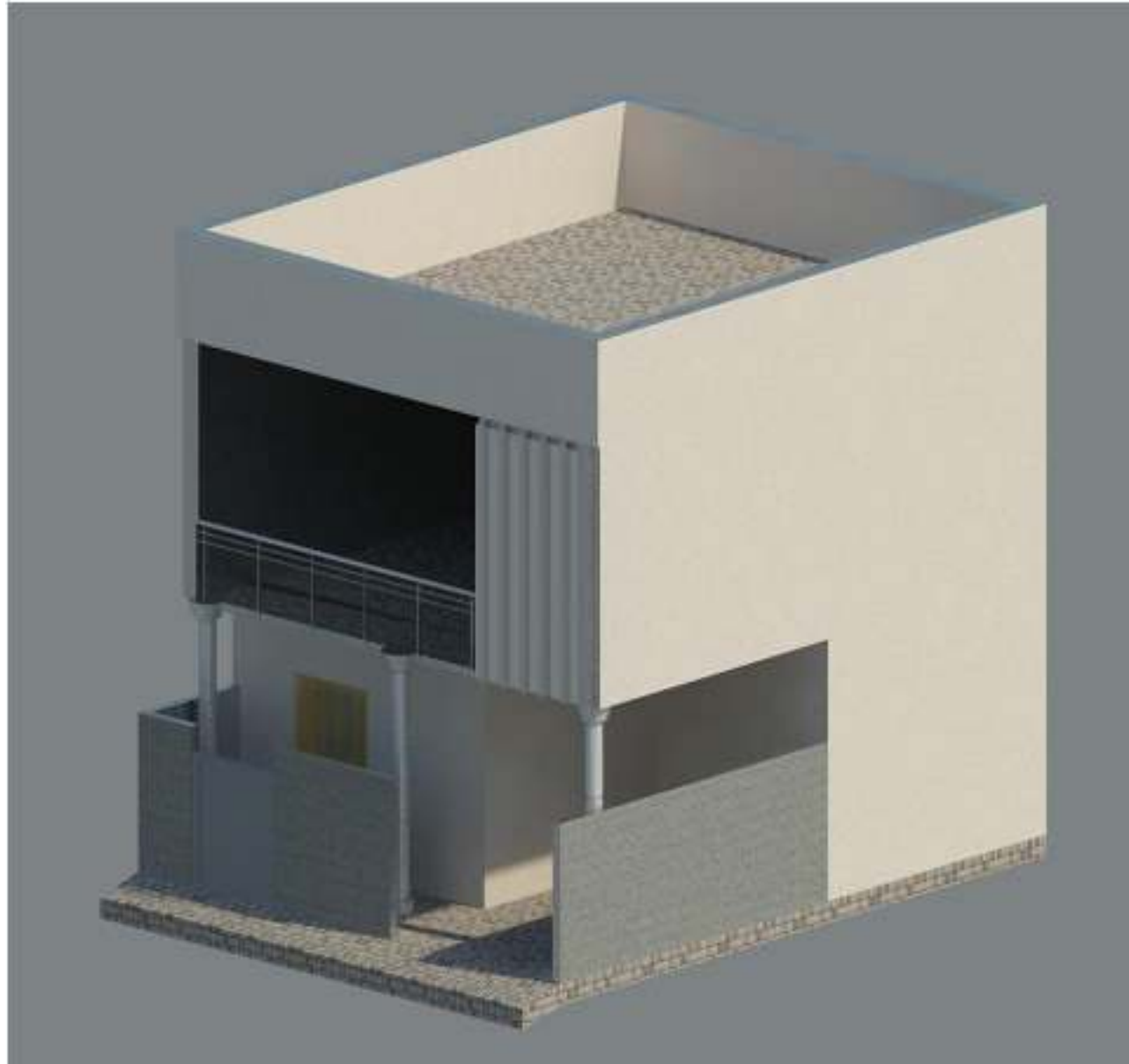






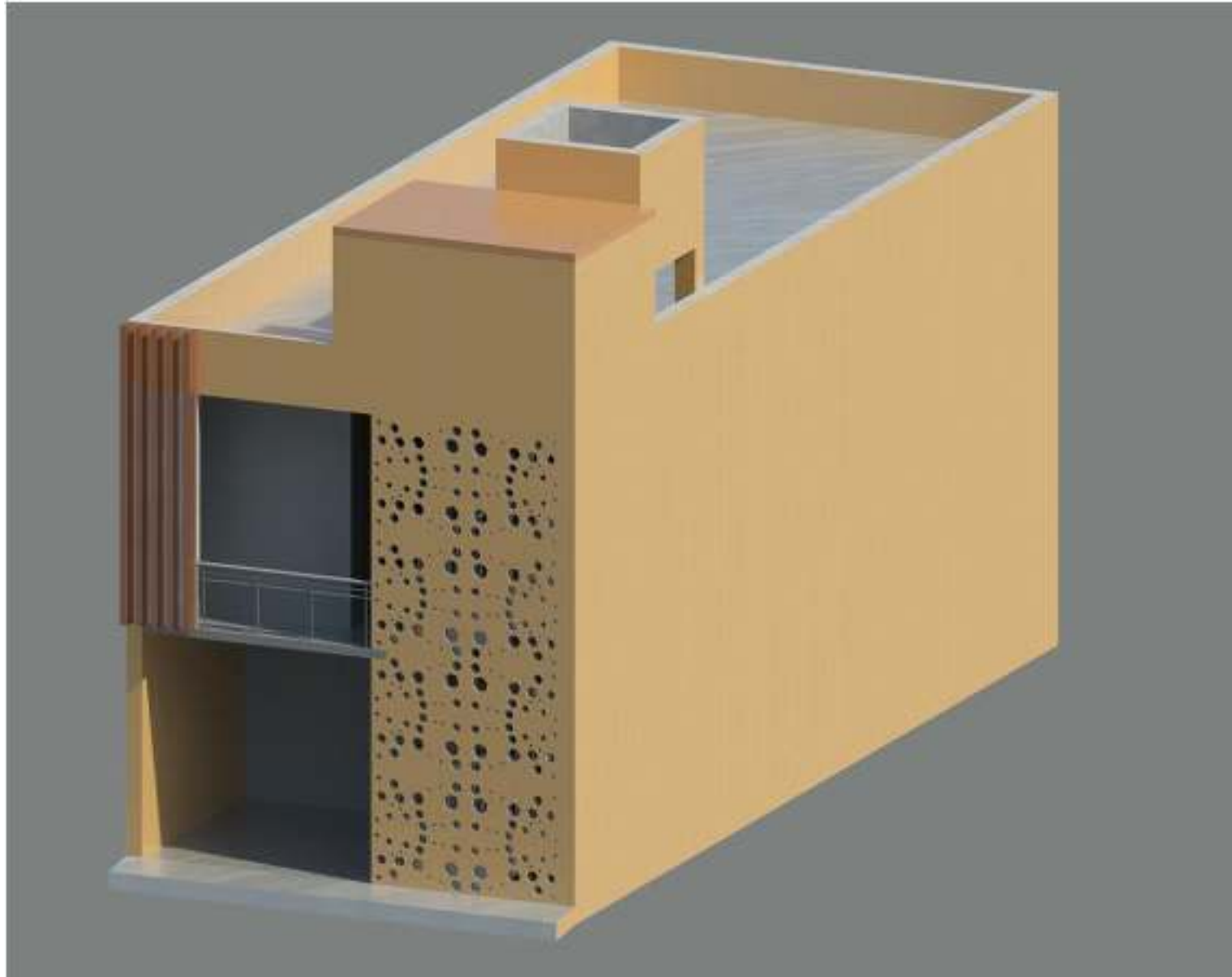














# Krish Design solution

*Uncompromising in Quality*



Office: No.31/5, Vinoba Nagar,5<sup>th</sup> Street,Tondiarpet,Chennai-600081.

Contact: +91 8438202610 / +91 8667589845 / +91 9841884126/+91 8610035668/ [krish.designsolution@gmail.com](mailto:krish.designsolution@gmail.com)